

Tabletop

Tavola



mills macine



Arthur Krupp mills are born from the collaboration of Arcturus with experts in seasoning for over 25 years. All products are designed and manufactured with commitment to flavor backed up with the best attention to the quality of products and performance of the mechanisms. Whether it is salt or pepper, often a few grains have the power to enrich and bloom the soul of a dish. The range is enriched with new colors, models and materials.

Le macine Arthur Krupp nascono dalla collaborazione di Arcturus con professionisti del gusto con un'esperienza di oltre 25 anni. Tutti i prodotti sono progettati e realizzati con l'impegno per il sapore supportato dalla massima attenzione per la qualità dei prodotti e alle prestazioni dei meccanismi. Sale e pepe sono gli ingredienti base per arricchire i nostri piatti. Grazie alle macine possiamo tritarli quando ci servono assicurandoci così che conservino freschezza e aroma. La gamma si arricchisce di nuovi colori, modelli e materiali.



Pepper mill
Macinapepe
Pfeffermühle
Moulin à poivre
Molinillo pimienta

art.	h. cm.	€
69036P16	16,5	22,00
69036P20	20,5	25,20



Salt mill
Macinasale
Salzmühle
Moulin à sel
Molinillo sal

art.	h. cm.	€
69036S16	16,5	20,90
69036S20	20,5	24,30



Pepper mill
Macinapepe
Pfeffermühle
Moulin à poivre
Molinillo pimienta

art.	h. cm.	€
69035P16	16,5	17,90



Salt mill
Macinasale
Salzmühle
Moulin à sel
Molinillo sal

art.	h. cm.	€
69035S16	16,5	16,90



Pepper mill
Macinapepe
Pfeffermühle
Moulin à poivre
Molinillo pimienta

art.	h. cm.	€
69007P17	17	16,60



Salt mill
Macinasale
Salzmühle
Moulin à sel
Molinillo sal

art.	h. cm.	€
69007S17	17	15,60



Pepper mill
Macinapepe
Pfeffermühle
Moulin à poivre
Molinillo pimienta

art.	h. cm.	€
69041P12	11,5	11,90
69041P16	16,0	14,60
69041P20	20,5	15,10

Shiny red. – Rosso lucido.



Salt mill
Macinasale
Salzmühle
Moulin à sel
Molinillo sal

art.	h. cm.	€
69041S12	11,5	10,00
69041S16	16,0	12,70
69041S20	20,5	13,30

Shiny red. – Rosso lucido.





AV

Pepper mill
Macinapepe
Pfeffermühle
Moulin à poivre
Molinillo pimienta

art.	h. cm.	€
69042P12	11,5	11,90
69042P16	16,0	14,60
69042P20	20,5	15,10

Shiny black. – Nero lucido.



AV

Salt mill
Macinasale
Salzmühle
Moulin à sel
Molinillo sal

art.	h. cm.	€
69042S12	11,5	10,00
69042S16	16,0	12,70
69042S20	20,5	13,30

Shiny black. – Nero lucido.



ABS

Pepper mill
Macinapepe
Pfeffermühle
Moulin à poivre
Molinillo pimienta

art.	h. cm.	€
69044P12	11,5	14,20
69044P16	16,0	17,60
69044P20	20,5	19,30

Matte grey. – Grigio opaco.



ABS

Salt mill
Macinasale
Salzmühle
Moulin à sel
Molinillo sal

art.	h. cm.	€
69044S12	11,5	12,30
69044S16	16,0	15,80
69044S20	20,5	17,50

Matte grey. – Grigio opaco.



ABS

Pepper mill
Macinapepe
Pfeffermühle
Moulin à poivre
Molinillo pimienta

art.	h. cm.	€
69043P12	11,5	14,20
69043P16	16,0	17,60
69043P20	20,5	19,30

Matte black. – Nero opaco.



ABS

Salt mill
Macinasale
Salzmühle
Moulin à sel
Molinillo sal

art.	h. cm.	€
69043S12	11,5	12,30
69043S16	16,0	15,80
69043S20	20,5	17,50

Matte black. – Nero opaco.



TOP GRINDING MILLS - Stainless Steel with acrylic spice chamber. The mechanism is located in the upper part to leave countertops free of residue, no mess. They also feature a grind select function with 5 settings for pepper and 3 for salt allowing quick and accurate changes from fine to coarse grinds. Select a fine grind for a big punch in sauces or soups or effortlessly switch to a more coarse grind for a more subtle but longer lasting taste, great for salads or steaks. As all Arthur Krupp mills they feature sharp ceramic mechanisms in the salt mill and carbon steel mechanism in the pepper mill.

MACINE INVERSA - Acciaio inox con serbatoio spezie in acrilico. Il meccanismo è collocato nella parte superiore. I piani di lavoro saranno sempre puliti, privi di residui di macinatura. Sono inoltre dotate di una funzione di preselezione della grana di macinatura con 5 impostazioni per il pepe e 3 per il sale che consentono cambi rapidi e precisi dalla grana fine a quella grossolana. Selezionate una macinatura fine per salse o zuppe per passare rapidamente senza fatica a una macinatura più grossolana per un gusto più deciso e persistente, ottimo per insalate o carne. Come tutte le macine Arthur Krupp, sono dotate di meccanismo in ceramica per il sale e in acciaio al carbonio per il pepe.



Pepper mill
Macinapepe
Pfeffermühle
Moulin à poivre
Molinillo pimienta

art.	h. cm.	€
69033P18	18	22,60

Black gun.



Salt mill
Macinasale
Salzmühle
Moulin à sel
Molinillo sal

art.	h. cm.	€
69033S18	18	17,50

Silver.



SPECIAL MILLS - 2-IN-1 SALT & PEPPER



2-IN-1MILL - Stainless Steel with acrylic spice chamber to show when it needs a refill. Adjustable grind mechanisms to change coarseness of the salt or pepper. Ceramic grinding mechanism for both salt & pepper chamber. This dual mill boasts a compact design which is ideal for those with limited storage and living space. Extremely easy to operate by turning the mill clockwise for pepper and anticlockwise for salt.

2-IN-1 - Acciaio inox con serbatoio spezie in acrilico per visualizzare quando è necessaria la ricarica. Macinatura regolabile per modificare la grana del sale o del pepe da fine a più grossolana. Meccanismi in ceramica. Questa doppia macina vanta un design compatto, ideale per chi ha poco spazio in cucina e sui tavoli. Estremamente facile da usare, ruotare in senso orario per il pepe e in senso antiorario per il sale.

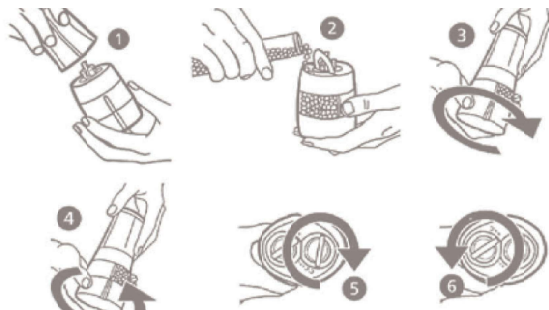


Salt & pepper mill
Macinasale & pepe
Salz u. Pfeffermühle
Moulin à sel et poivre
Molinillo sal y pimienta

art.	h. cm.	€
69034-14	14	22,30

Silver.

AY
SS



DUO SALT & PEPPER MILL

AY SS



DUO salt & pepper mill
 DUO macinapepe & sale
 DUO Salz u. Pfeffermühle
 DUO Moulin à sel et poivre
 DUO Molinillo sal y pimienta

art.	h. cm.	€
69003-02	17	24,90



Pepper mill
 Macinapepe
 Pfeffermühle
 Moulin à poivre
 Molinillo pimienta

art.	h. cm.	€
69011P12	11,5	17,50
69011P16	16,0	22,80
69011P20	20,0	26,20
69011P32	32,0	31,90

Black vintage. – Nero vintage.



Pepper mill
 Macinapepe
 Pfeffermühle
 Moulin à poivre
 Molinillo pimienta

art.	h. cm.	€
69014P12	11,5	16,70
69014P16	16,0	20,80
69014P20	20,5	24,10
69014P32	32,0	30,50

Natural light. – Naturale chiaro.



Pepper mill
 Macinapepe
 Pfeffermühle
 Moulin à poivre
 Molinillo pimienta

art.	h. cm.	€
69013P12	11,5	17,20
69013P16	16,0	21,70
69013P20	20,5	25,10
69013P32	32,0	31,90

Matte finish white. – Bianco opaco.



Salt mill
 Macinasale
 Salzmühle
 Moulin à sel
 Molinillo sal

art.	h. cm.	€
69011S12	11,5	15,60
69011S16	16,0	20,80
69011S20	20,0	24,20
69011S32	32,0	30,00

Black vintage. – Nero vintage.



Salt mill
 Macinasale
 Salzmühle
 Moulin à sel
 Molinillo sal

art.	h. cm.	€
69014S12	11,5	14,80
69014S16	16,0	18,90
69014S20	20,5	22,20
69014S32	32,0	28,50

Natural light. – Naturale chiaro.



Salt mill
 Macinasale
 Salzmühle
 Moulin à sel
 Molinillo sal

art.	h. cm.	€
69013S12	11,5	15,30
69013S16	16,0	19,80
69013S20	20,5	23,30
69013S32	32,0	30,00

Matte finish white. – Bianco opaco.



Pepper mill
Macinapepe
Pfeffermühle
Moulin à poivre
Molinillo pimienta

art.	h. cm.	€
69001P12	11,5	10,70
69001P16	16,0	13,50
69001P20	20,0	14,30
69001P32	32,0	20,60

AY



Salt mill
Macinasale
Salzmühle
Moulin à sel
Molinillo sal

art.	h. cm.	€
69001S12	11,5	8,80
69001S16	16,0	11,60
69001S20	20,0	12,50
69001S32	32,0	18,80

AY



Pepper mill
Macinapepe
Pfeffermühle
Moulin à poivre
Molinillo pimienta

art.	h. cm.	€
69002P14	14	11,60
69002P19	19	14,10

AY



Salt mill
Macinasale
Salzmühle
Moulin à sel
Molinillo sal

art.	h. cm.	€
69002S14	14	9,80
69002S19	19	12,20

AY



Pepper mill
Macinapepe
Pfeffermühle
Moulin à poivre
Molinillo pimienta

art.	h. cm.	€
69005P13	13	14,40

AY

SS



Salt mill
Macinasale
Salzmühle
Moulin à sel
Molinillo sal

art.	h. cm.	€
69005S13	13	12,60

AY

SS

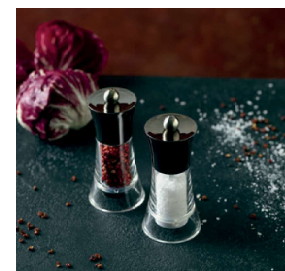


Pepper mill
Macinapepe
Pfeffermühle
Moulin à poivre
Molinillo pimienta

art.	h. cm.	€
69006P13	13	13,90

AY

SS



Salt mill
Macinasale
Salzmühle
Moulin à sel
Molinillo sal

art.	h. cm.	€
69006S13	13	12,00

AY

SS

Arthur Krupp®



Pepper mill
Macinasapepe
Pfeffermühle
Moulin à poivre
Molinillo pimienta

art.	h. cm.	€
69020P10	10	16,10
69021P10	10	16,10
69022P10	10	16,10

Gloss finish. – Finitura lucida.



AV
SS

Salt mill
Macinasale
Salzmühle
Moulin à sel
Molinillo sal

art.	h. cm.	€
69020S10	10	14,10
69021S10	10	14,10
69022S10	10	14,10

Gloss finish. – Finitura lucida.

AV
SS



Chili grinder
Macinasaperoncino
Paprikamühle
Moulin à piment
Molinillo chile

art.	h. cm.	€
69030-13	13	10,60



Nutmeg mill
Macina noce moscata
Muskatmühle
Moulin à mouscade
Molinillo nuez moscada

art.	h. cm.	€
69032-09	9,5	11,80

AV

AV



servicing board



A new selection of serving boards by Arthur Krupp, designed to bring moments of sharing to the table. Arthur Krupp expands its range with eight new serving boards, designed to be brought directly to the table and encourage moments of sharing. A new style of presentation- elegant and contemporary.

Da Arthur Krupp una nuova selezione di taglieri da portata, per servire in tavola un momento di condivisione. Arthur Krupp implementa la sua offerta con otto nuovi taglieri pensati per essere presentati direttamente in tavola, promuovendo attimi di condivisione. Una nuova modalità di presentazione, elegante e contemporanea.



Rectangular serving board
 Tagliere da portata rettangolare
 Rechteckiges Servierbrett
 Plateau de service rectangulaire
 Tabla para servir rectangular

art.	dim. cm.	h. cm.	U. Pack	€
69101-35	35x20	2,5	1	36,10

Teak wood – Legno Teak



Rectangular serving board
 Tagliere da portata rettangolare
 Rechteckiges Servierbrett
 Plateau de service rectangulaire
 Tabla para servir rectangular

art.	dim. cm.	h. cm.	U. Pack	€
69102-46	46x20	2,5	1	48,90

Teak wood – Legno Teak



Arthur Krupp®



Serving board

Tagliere da portata
Servierbretter
Plateau de service
Tabla para servir

art.	dim. cm.	h. cm.	U. Pack	€
69104-28	28x28	2	4	96,40

Teak wood – Legno Teak



Round serving board

Tagliere da portata rotondo
Rundes Servierbrett
Plateau de service rond
Tabla para servir redonda

art.	dim. cm.	h. cm.	U. Pack	€
69105-32	32	3	1	57,10

Teak wood – Legno Teak



Arthur Krupp®



Leaf-shaped serving board

Tagliere da portata foglia

Servierbrett in Blattform

Plateau de service feuille

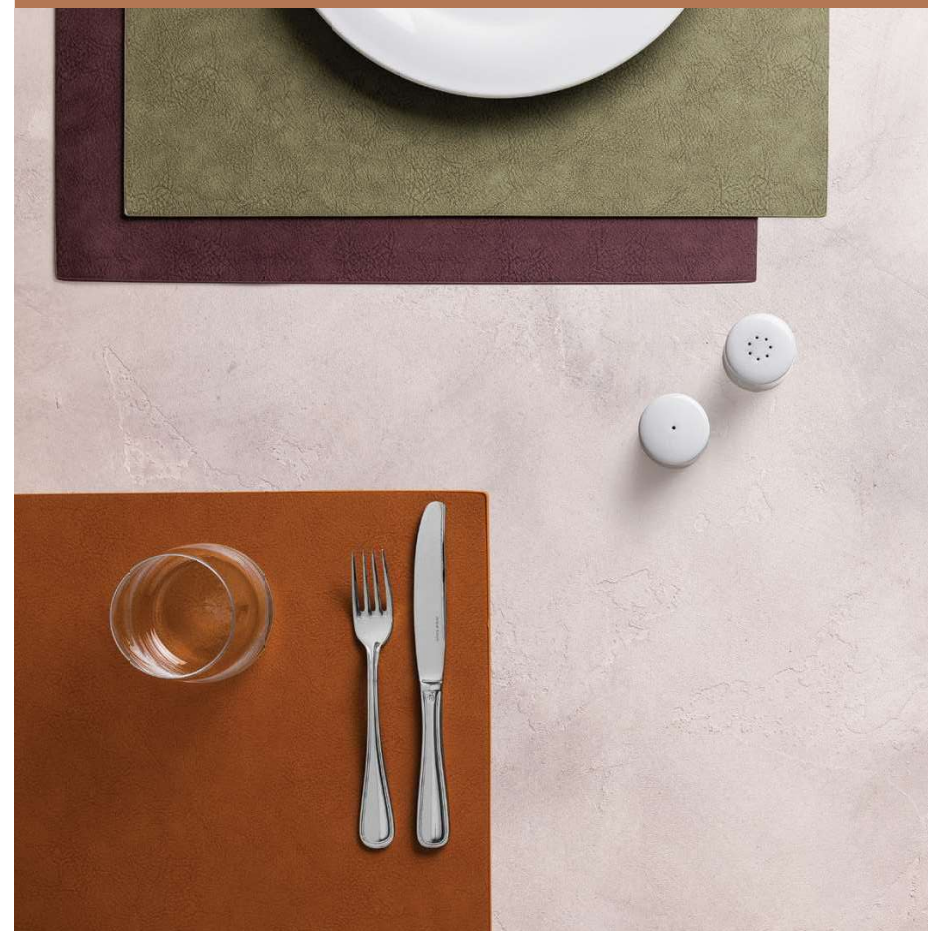
Tabla para servir hoja

art.	dim. cm.	h. cm.	U. Pack	€
69108-48	47,8x25	2,2	1	31,30

Acacia wood – Legno acacia

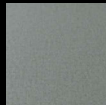


placemats



Placemats are a key element in the presentation of a restaurant, helping to create a unique experience for customers both indoors and outdoors. They contribute to an elegant atmosphere, offering a neat and clean presentation of the tables. Easy to clean and maintain: a simple wipe with a sponge is enough to remove stains or food residues, allowing staff to save time and resources when maintaining table linens. They are also easy to stack and store when not in use, saving space. Environmental sustainability: by choosing placemats, you help reduce environmental impact, saving CO2 and water.

Le tovaglie americane sono un elemento fondamentale nella presentazione del ristorante e nel creare un'esperienza unica per i clienti, sia all'interno che all'esterno. Contribuiscono a creare un'atmosfera elegante, offrendo una presentazione ordinata e pulita dei tavoli. Facili da pulire e mantenere: basta una semplice passata con una spugna per rimuovere macchie o residui di cibo, permettendo al personale di risparmiare tempo e risorse nella manutenzione della biancheria da tavola. Sono inoltre facili da impilare e riporre quando non vengono utilizzate, risparmiando spazio. Sostenibilità ambientale: scegliendo le tovaglie americane, aiuti a ridurre l'impatto ambientale, risparmiando CO2 e acqua.

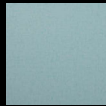


SLATE GRAY

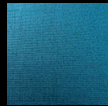


LIGHT BROWN

PEAR



LIGHT

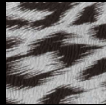


PEARL

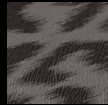
BLUE



GOLD



SILVER



ANTHRACITE

TIGER PEARL



BRONZE



COPPER

PLAIN



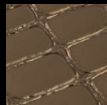
DARK BROWN



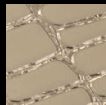
SILVER



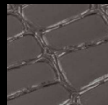
GOLD



COPPER

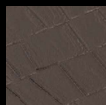


CLEAR GOLD



ANTHRACITE

CROCODILE



COPPER



GOLD

SKIN PEARL



Placemat

Tovaglietta americana
Tischset
Set de table
Mantelin

art.	dim. cm.	U. Pack	€
66529-17	45x30	6	31,40

Pearl Slate Grey.

EVA, plastic material based on polyethylene. – EVA (Etilene Vinil Acetato).



Placemat

Tovaglietta americana
Tischset
Set de table
Mantelin

art.	dim. cm.	U. Pack	€
66529-18	45x30	6	31,40

Pearl Light Brown.

EVA, plastic material based on polyethylene. – EVA (Etilene Vinil Acetato).



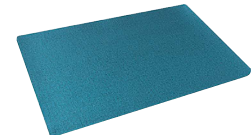
Placemat

Tovaglietta americana
Tischset
Set de table
Mantelin

art.	dim. cm.	U. Pack	€
66529-20	45x30	6	31,40

Light Blue.

EVA, plastic material based on polyethylene. – EVA (Etilene Vinil Acetato).



Placemat

Tovaglietta americana
Tischset
Set de table
Mantelin

art.	dim. cm.	U. Pack	€
66529-21	45x30	6	31,40

Pearl Blue.

EVA, plastic material based on polyethylene. – EVA (Etilene Vinil Acetato).



Placemat

Tovaglietta americana
Tischset
Set de table
Mantelin

art.	dim. cm.	U. Pack	€
66529-01	45x30	6	31,40

Tiger Pearl Gold.

EVA, plastic material based on polyethylene. – EVA (Etilene Vinil Acetato).



Placemat

Tovaglietta americana
Tischset
Set de table
Mantelin

art.	dim. cm.	U. Pack	€
66529-02	45x30	6	31,40

Tiger Pearl Silver.

EVA, plastic material based on polyethylene. – EVA (Etilene Vinil Acetato).



Placemat

Tovaglietta americana
Tischset
Set de table
Mantelin

art.	dim. cm.	U. Pack	€
66529-03	45x30	6	31,40

Tiger Pearl Anthracite.

EVA, plastic material based on polyethylene. – EVA (Etilene Vinil Acetato).



Placemat

Tovaglietta americana
Tischset
Set de table
Mantelin

art.	dim. cm.	U. Pack	€
66529-04	45x30	6	31,40

Plain Bronze.

EVA, plastic material based on polyethylene. – EVA (Etilene Vinil Acetato).



Placemat

Tovaglietta americana
Tischset
Set de table
Mantelin

art.	dim. cm.	U. Pack	€
66529-06	45x30	6	31,40

Plain Copper.

EVA, plastic material based on polyethylene. – EVA (Etilene Vinil Acetato).

Arthur Krupp®



Placemat
Tovaglietta americana
Tischset
Set de table
Mantelin
art. | dim. cm. | U. Pack | €
66529-07 | 45x30 | 6 | 31,40

Plain Dark Brown.
EVA, plastic material based on polyethylene. – EVA (Etilene Vinil Acetato).



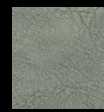
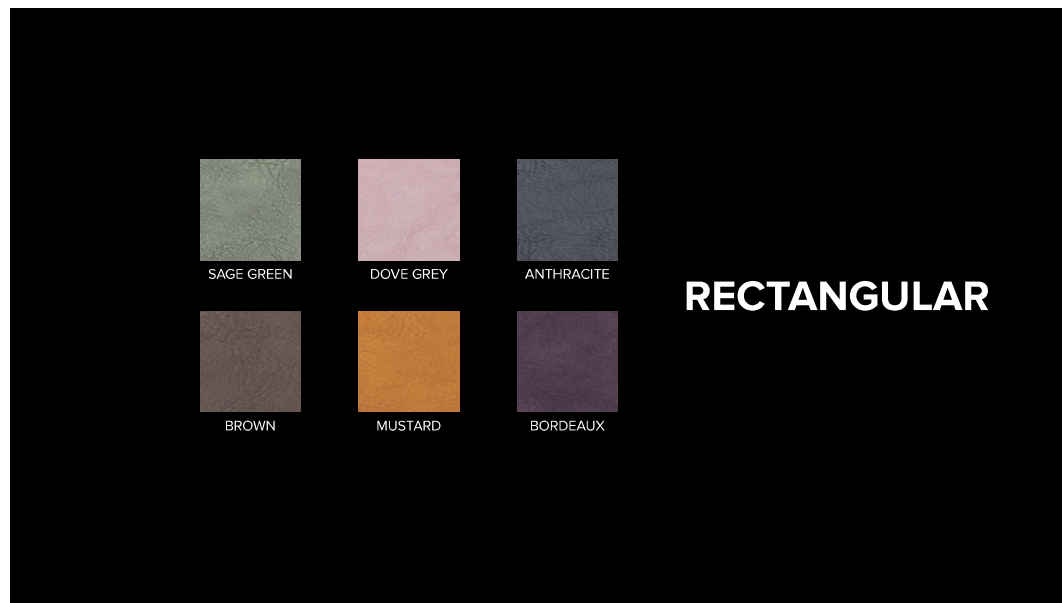
Placemat
Tovaglietta americana
Tischset
Set de table
Mantelin
art. | dim. cm. | U. Pack | €
66529-08 | 45x30 | 6 | 31,40

Plain Silver.
EVA, plastic material based on polyethylene. – EVA (Etilene Vinil Acetato).



Placemat
Tovaglietta americana
Tischset
Set de table
Mantelin
art. | dim. cm. | U. Pack | €
66529-09 | 45x30 | 6 | 31,40

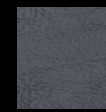
Plain Gold.
EVA, plastic material based on polyethylene. – EVA (Etilene Vinil Acetato).



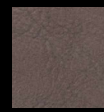
SAGE GREEN



DOVE GREY



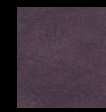
ANTHRACITE



BROWN



MUSTARD



BORDEAUX

RECTANGULAR



Placemat
Tovaglietta americana
Tischset
Set de table
Mantelin
art. | dim. cm. | U. Pack | €
66529-11 | 45x30 | 6 | 31,40

Crocodile Copper.
EVA, plastic material based on polyethylene. – EVA (Etilene Vinil Acetato).



Placemat
Tovaglietta americana
Tischset
Set de table
Mantelin
art. | dim. cm. | U. Pack | €
66529-12 | 45x30 | 6 | 31,40

Crocodile Clear Gold.
EVA, plastic material based on polyethylene. – EVA (Etilene Vinil Acetato).



Placemat
Tovaglietta americana
Tischset
Set de table
Mantelin
art. | dim. cm. | U. Pack | €
66529-13 | 45x30 | 6 | 31,40

Crocodile Anthracite.
EVA, plastic material based on polyethylene. – EVA (Etilene Vinil Acetato).



Placemat
Tovaglietta americana
Tischset
Set de table
Mantelin
art. | dim. cm. | U. Pack | €
66529-14 | 45x30 | 6 | 31,40

Skin Pearl Copper.
EVA, plastic material based on polyethylene. – EVA (Etilene Vinil Acetato).



Placemat
Tovaglietta americana
Tischset
Set de table
Mantelin
art. | dim. cm. | U. Pack | €
66529-15 | 45x30 | 6 | 31,40

Skin Pearl Gold.
EVA, plastic material based on polyethylene. – EVA (Etilene Vinil Acetato).



Placemat, set 6 pcs
Tovaglietta americana, set 6 pz
Tischset, 6 Stk
Set de table, 6 pcs
Mantelin, 6 piezas
art. | dim. cm. | U. Pack | €
66530-01 | 43x30 | 6 | 31,40

Sage Green.
Recycle PU leather with painted edge. – Pelle PU riciclata con bordo verniciato.



Placemat, set 6 pcs
Tovaglietta americana, set 6 pz
Tischset, 6 Stk
Set de table, 6 pcs
Mantelin, 6 piezas
art. | dim. cm. | U. Pack | €
66530-02 | 43x30 | 6 | 31,40

Dove Grey.
Recycle PU leather with painted edge. – Pelle PU riciclata con bordo verniciato.



Placemat, set 6 pcs
Tovaglietta americana, set 6 pz
Tischset, 6 Stk
Set de table, 6 pcs
Mantelin, 6 piezas
art. | dim. cm. | U. Pack | €
66530-03 | 43x30 | 6 | 31,40

Anthracite.
Recycle PU leather with painted edge. – Pelle PU riciclata con bordo verniciato.



Placemat, set 6 pcs
Tovaglietta americana, set 6 pz
Tischset, 6 Stk
Set de table, 6 pcs
Mantelin, 6 piezas
art. | dim. cm. | U. Pack | €
66530-04 | 43x30 | 6 | 31,40

Brown.
Recycle PU leather with painted edge. – Pelle PU riciclata con bordo verniciato.



Placemat, set 6 pcs
Tovaglietta americana, set 6 pz
Tischset, 6 Stk
Set de table, 6 pcs
Mantelin, 6 piezas
art. | dim. cm. | U. Pack | €
66530-05 | 43x30 | 6 | 31,40

Mustard.
Recycle PU leather with painted edge. – Pelle PU riciclata con bordo verniciato.



Placemat, set 6 pcs
Tovaglietta americana, set 6 pz
Tischset, 6 Stk
Set de table, 6 pcs
Mantelin, 6 piezas
art. | dim. cm. | U. Pack | €
66530-06 | 43x30 | 6 | 31,40

Bordeaux.
Recycle PU leather with painted edge. – Pelle PU riciclata con bordo verniciato.